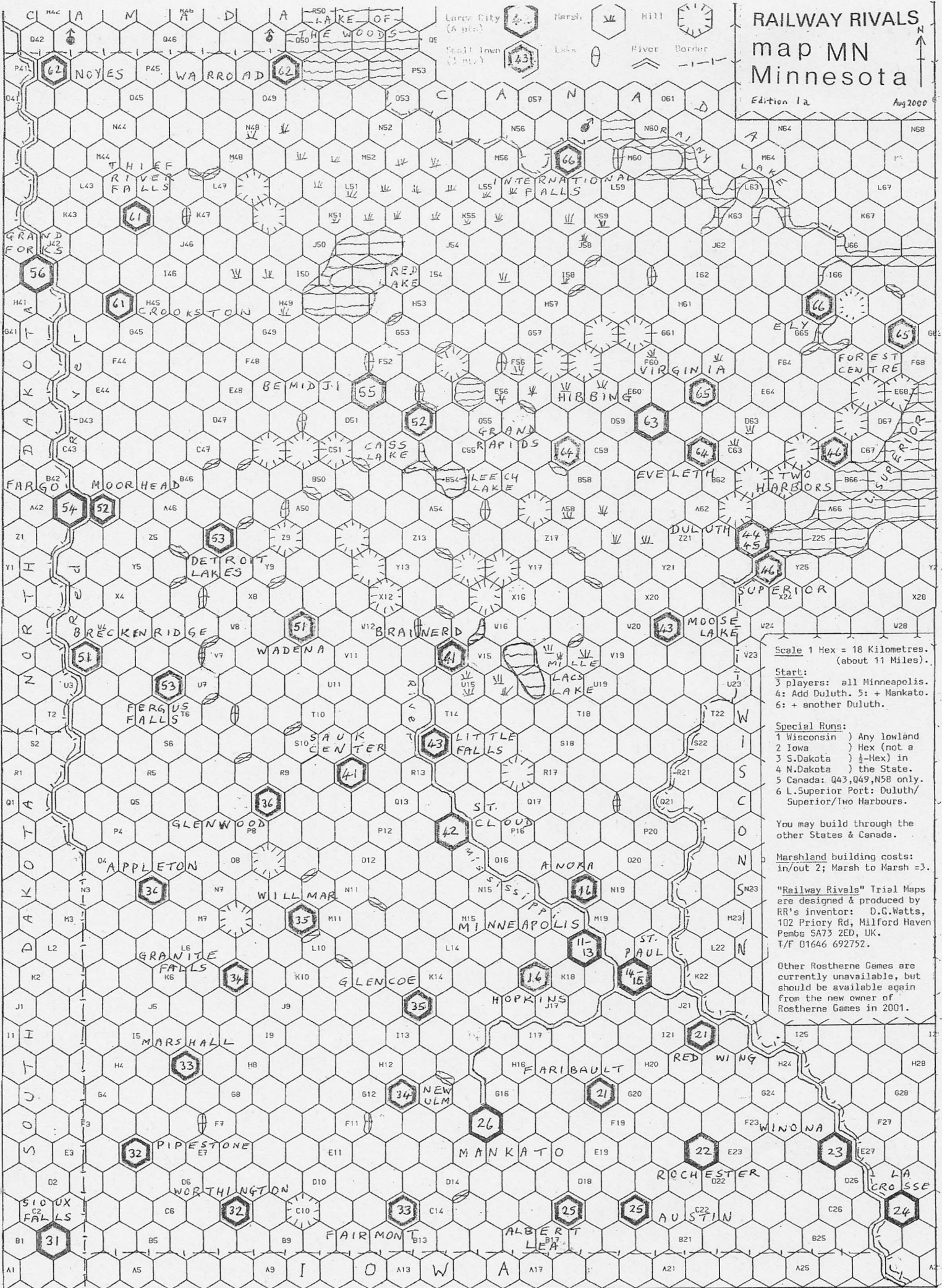


RAILWAY RIVALS map MN Minnesota

Edition 1a Aug 2000



Scale 1 Hex = 18 Kilometres.
(about 11 Miles).

Start:
3 players: all Minneapolis.
4: Add Duluth. 5: + Mankato.
6: + another Duluth.

Special Runs:
1 Wisconsin } Any lowland
2 Iowa } Hex (not a
3 S.Dakota } 1/2-Hex) in
4 N.Dakota } the State.
5 Canada: Q43, Q49, N58 only.
6 L. Superior Port: Duluth/
Superior/Two Harbours.

You may build through the
other States & Canada.

Marshland building costs:
in/out 2; Marsh to Marsh = 3.

"Railway Rivals" Trial Maps
are designed & produced by
RR's inventor: D.G.Watts,
102 Priory Rd, Milford Haven
Pemb's SA73 2ED, UK.
T/F 01646 692752.

Other Rostherne Games are
currently unavailable, but
should be available again
from the new owner of
Rostherne Games in 2001.